

# The Bilge Pump

Vol. 01, No. 03 - August, 2013



*The Irregular Publication of the Crew of the Barque Lone Star*

From the Editors: Along with the newsletter itself, we are attaching another pastiche written by Jack Brazos III and provided to us by his literary agent, Marland Henderson, titled THE CASE OF THE MISSING PEARLS OF NORWAY. In this month, we will also review our test of a Holmesian theory.

Don, Steve, & Joe

## September, 2013 Meeting

The August meeting will be held on Sunday, September 2, at McFadden's in Addison.

Part 2, Chapters 1-7 of "A Study in Scarlet" will be discussed. A quiz on the reading will be conducted at the beginning of the meeting.

Let's discuss the Mormons, as well as is he one of the dumber persons Holmes encountered ??

Each monthly meeting will also include appropriate toasts as well as general business, introductions, and general fellowship.

Remember to bring books you no longer want for the book exchange !!

## August, 2013 Meeting

The August meeting was held on August 4, with 19 members in attendance. The opening toast was presented by Sharon Lowry to Inspector Lestrade (Mr. Hobbs).

We discussed the idea of holding a Southwest Sherlockian conference, as well as developing a journal for the Society on an annual basis.

The monthly quiz covered chapters 4-7 of A Study in Scarlet. Jack Pugh surpassed everyone else this month on the quiz. We then conducted a test on one of Sherlock's deductive skills (see page 2).

David Foster gave the closing toast to Thomas Carlyle, who Sherlock quotes in the story. We closed with a BSJ reading about Baker Street Irregulars, far and wide (see below).

For more information concerning our society, visit: <http://barquelonestar.com/>

You can follow us on Twitter at: @barquelonestar

You can friend us on Facebook at: <http://www.facebook.com/BarqueLoneStar>

## Who is a Baker Street Irregular ? -- Baker Street Journal Excerpt – Editor's Gas Lamp, April, 1948

**B**Y CANONICAL DEFINITION, a Baker Street Irregular is one who, in the Sherlockian world, is prepared—and equipped—to "go everywhere, see everything, overhear everyone." That is a large if somewhat technical specification; but the source from which it derives commends it to consideration.



More narrowly, a Baker Street Irregular is a member, in good and accepted standing, of that small band of zealots which grouped itself together, one June evening in the far-gone year of 1934, for the avowed and unashamed purpose of keeping green in perpetuity the name and fame of Sherlock Holmes. And adhering to that core, so closely that distinction has become impossible, are the members of the Scion Societies throughout the land.

But the attribution of true Irregularity is not to be found in any of these categoric definitions. An Irregular is, in sober fact, any kindred soul who gives spontaneously and abundantly of his time and thought in devotion to the

Sacred Writings and to the writings about the Writings; who feels his-pulses quicken and his step seem lighter whenever, in a darkling world, he turns the corner of reality into the most magic of all streets.

He is one of that legion who cluster about the banners which Dr. Watson and his followers have raised, and who occasionally, as the spirit moves them, raise a modest banner of their own.

He is a zealot in his own right, and a defender and protagonist of the zeal in others that seeks to keep alive the cause in which he shares belief.



## Testing Holmes Theory

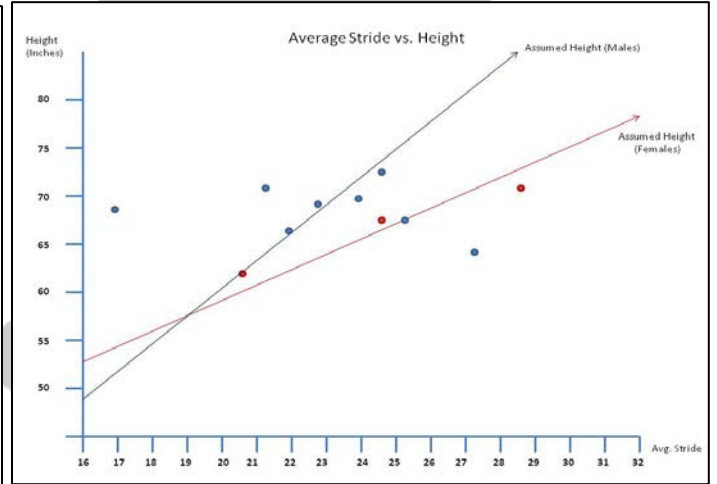
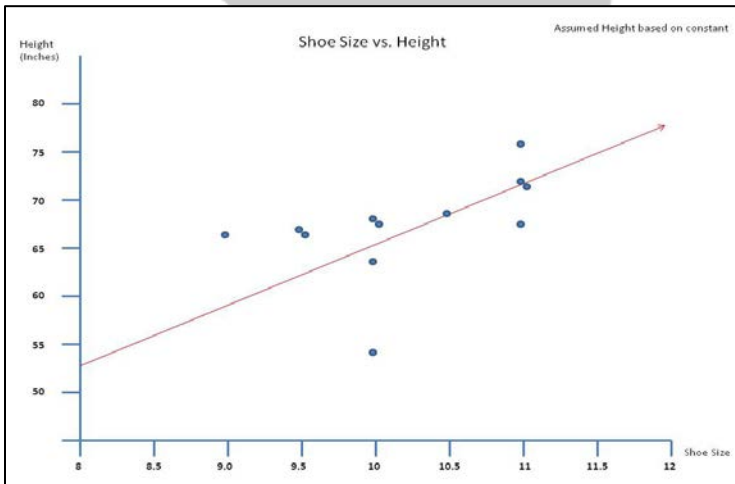
In *A Study in Scarlet*, Holmes explains to Watson, "Why, the height of a man, in nine cases out of ten, can be told from the length of his stride. It is a simple calculation enough, though there is no use my boring you with figures."

During our August meeting, the Crew tested this theory.

For those that participated, we had them take ten strides, which we measured with a tape measure. We then divided by 10 to obtain their average stride length. This was divided by a constant (found on the internet) to get their assumed height. We then measured each person to determine their actual height. Interestingly, women and men have a different constant to divide by, according to the sites I found on the internet.

We also measured each person's foot length, which is also supposed to determine an approximate height.

Below are the two charts for foot length vs. height, as well as stride length vs. height.



Except for a couple of outliers for each test, the majority of people tested fell within the accepted range. Various websites discussing these tests indicate you must take into account elderly people that may have a shorter stride, as well as those who have a physical disability which may limit the stride length. As we get older, for many of us, our height may start to lessen (osteoporosis and other factors), while our foot length may actually increase (foot flattens out).

Bottom line: it appears Holmes was correct in his assertion you can estimate someone's height based on their stride. However, we must remember Holmes only stated the person they would be looking for was over 6 feet in height, and did not give an exact figure for his estimated height.

## Sherlockian Myth Busters

If you enjoy the show Myth Busters on the Discovery Channel, you will enjoy two light-hearted Sherlockian versions on the internet. Steven Doyle, who publishes the Baker Street Journal, and some of his friendly cohorts, produced these videos to determine the validity of two scenes from the Canon.

The first video determines whether Lysander Stark could have chopped Victor Hatherley's thumb off while Victor was hanging from a window sill.

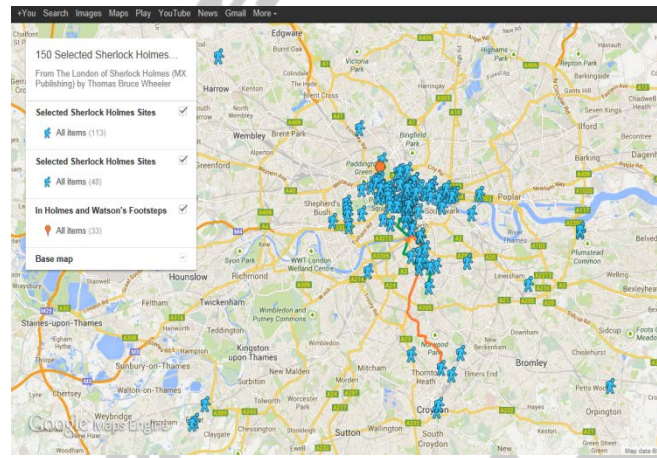
This video can be seen at:

<http://www.youtube.com/watch?v=UTBOH86H7as>

The second video determines whether Maria Gibson could actually shoot herself with a revolver and then have the gun disappear over the side of a bridge. This video can be seen at:

<http://www.youtube.com/watch?v=m0etbZuM2yw>

Both videos are entertaining and thought provoking.



## Interactive Map of Sherlock's London

Thomas Bruce Wheeler has created a very useful map of London, where you can click on different sites and see the Canonical reference to the location. It even provide GPS locations, so when you take a trip to London, it will be easier to find each of the locations.

<http://mapsengine.google.com/map/viewer?mid=zz7OCly2oDA4.k6pgNWXmShgE>

## Sherlock Holmes Through Time and Place

On August 9-11, 2013, The Norwegian Explorers of Minnesota and the Friends of the Sherlock Holmes Collections at the University of Minnesota held a conference to explore aspects of Sherlock Holmes Through Time and Place.

The conference featured presentations by a wonderful group of international Sherlockians, vendor tables, as well as a star-studded party at the host's house.

**We will give a much more thorough accounting of the conference and photos in next month's newsletter.**



**ATTENTION!**



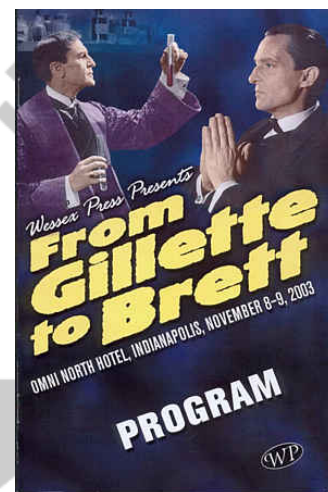
## BREAKING NEWS FROM WESSEX PRESS!

Wessex Press is pleased to announce another in its series of blockbuster Sherlockian conferences!

### FROM GILLETTE TO BRETT IV: BASIL, BENEDICT, AND BEYOND.

September 12–14, 2014  
Indiana University, Bloomington, Indiana

Devoted to Sherlock Holmes on stage, screen, television, and radio, *From Gillette to Brett IV* will feature rare Sherlockian films, vendors, and an all-star roster of distinguished speakers, presenters, and events. The conference will be held on the beautiful campus of Indiana University at the Indiana Memorial Union. We are thrilled to present exclusive, 75th Anniversary screenings of Basil Rathbone's *The Hound of the Baskervilles* and *The Adventures of Sherlock Holmes* in the state-of-the-art IU Cinema ([www.cinema.indiana.edu](http://www.cinema.indiana.edu)).



Watch this site for future announcements!

[www.wessexpress.com/html/g2b4.html](http://www.wessexpress.com/html/g2b4.html)

### BUT MARK YOUR CALENDARS NOW!

See what the reviewers said about **From Gillette to Brett III!**

"That is just spectacular!"

- [Better Holmes and Gardens](#)

"Gillette to Brett III Was Unforgettable!"

- [Baker Street Beat](#)

"Wow! What a great weekend!"

- [Sherlock Holmes Society of St. Charles](#)

**From Gillette to Brett III. A superb event for Sherlockians everywhere. Without a doubt, one of the most enjoyable events I have ever attended. So friendly, so fun, so edifying. Bravo!"**

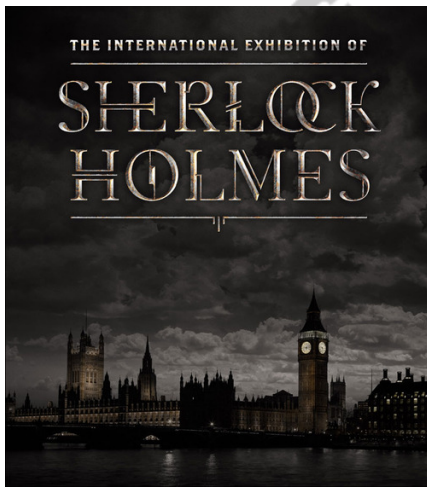
- *Tony Earnshaw, author of An Actor and A Rare One: Peter Cushing as Sherlock Holmes*

---

# The International Exhibition of Sherlock Holmes

**We have already reached out to the sponsors of this exhibition. We hope to play a part when it comes to Dallas in February, 2015 – volunteer at the event, flyers for our society, outreach, etc.**

The International Exhibition of Sherlock Holmes makes its world premiere at the Oregon Museum of Science and Industry (OMSI) in Portland, Oregon, October 10, 2013, exhibition organizers announced today. A collaborative effort Between Conan Doyle Estate Ltd., Exhibits Development Group (EDG), Geoffrey M. Curley + Associates (GMCA), and OMSI, this unique and interactive experience showcases areas of forensic science that enabled Sherlock Holmes to solve crimes, as well as the historic underpinnings of author Sir Arthur Conan Doyle's rich and vibrant stories.



Sherlock Holmes, a chemistry and forensics expert ahead of his time, used seemingly trivial observations of clues others missed to solve some of his era's most mysterious crimes. His practices and techniques, created in the mind of doctor--- turned---author Conan Doyle, changed the way police work was conducted, and remain in practice today.

The International Exhibition of Sherlock Holmes features original manuscripts and period artifacts, investigative tools influenced and used by Sherlock Holmes, and interactive crime---solving opportunities. Guests will be transported into Sherlock Holmes' London to solve a crime in a world that was being introduced to his ground---breaking methods for the first time, a world filled with innovation and experimentation.

The Estate's U.S. representative Jon Lellenberg: "Museum visitors will not only see what in science and literature inspired Sir Arthur Conan Doyle to create Sherlock Holmes, and how Holmes investigated and solved crimes as the world's first consulting detective, but will visit their two worlds as well, and the very rooms in which all this took place."

Exhibition guests will learn about the practices of Sherlock Holmes, the world in which Conan Doyle drew from to develop his stories, and the history of forensic science. The galleries in the exhibition include:

- **Dr. Conan Doyle's Study** – Conan Doyle, a scientifically educated physician, was a curious and tireless investigator his entire life. Guests will discover his world first as a medical student at Edinburgh University, then as an apprentice at Royal Surgeons' Hall there, and finally as a creator of literary genius while practicing medicine in Southsea, Portsmouth, in the 1880s, and London in the early 1890s. On display will be an original manuscript, letters, and illustrations through which guests will gain perspective on the experiences that influenced Conan Doyle in creating Sherlock Holmes.
- **Science and History** – Sherlock Holmes solved mysteries using observation and solid scientific experimentation, something real---world detectives (police or private) had not yet embraced. Guests will participate in experiments of their own by exploring the developments in science and technology in the 1890s, developments still very relevant today. Supported by forensics expert and crime historian E. J. Wagner, author of *The Science of Sherlock Holmes*, the exhibition digs into real forensic studies in order to demonstrate the link between the Sherlock Holmes stories' detective science and the world of today.
- **Sherlock Holmes in Baker Street** – Guests will visit Sherlock Holmes' and Dr. Watson's sitting---room at 221B Baker Street, London, where their investigations began and concluded – a room looming large in popular imagination around the globe ever since the first Sherlock Holmes tale *A Study in Scarlet* in 1887. Of it, poet Vincent Starrett said: "Here dwell together still two men of note / Who never lived and so can never die. Here, though the world explode, these two survive / And it is always eighteen ninety---five."
- **Become a Detective** – Guests will replace the museum map with a book full of clues while hot on a trail to solve a

remarkable murder. Using their own powers of observation, guests can crack a new Sherlock Holmes mystery written exclusively for this exhibition by Daniel Stashower, the acclaimed historian, award-winning Conan Doyle biographer (author of *Teller of Tales: The Life of Arthur Conan Doyle* and co-editor of *Arthur Conan Doyle: A Life in Letters*), and author of new Sherlock Holmes stories as well.

- Culture of Sherlock – Pop culture enthusiasts will enjoy the exhibition’s final gallery, housing a robust collection of all things “Sherlockian,” ranging from vintage Sherlock Holmes-themed card games, comics, and magazines, to radio broadcasts, movie clips, and television shows. Featured are costumes worn by Robert Downey Jr. and Jude Law in Warner Bros.’ current Sherlock Holmes movies set in the Victorian era, alongside costumes and props from the CBS hit television show *Elementary*, setting Sherlock Holmes in present day. The exhibition will offer museum guests the most comprehensive display anywhere of Sherlock Holmes in the popular imagination over the 126 years since his creation.

The International Exhibition of Sherlock Holmes debuts at OMSI in October 2013 and will tour ten cities in North America before it tours internationally. Visit [www.sherlockholmesexhibition.com](http://www.sherlockholmesexhibition.com) for updates on the tour.

## The Master of the House

Listed on the left are the names of 20 famous Holmesian Homes. On the right are the men who ruled over them. See how many you can match up.

1.	Abbey Grange	Charles McCarthy
2.	Appledore Towers	Sir Eustace Brackenstall
3.	Birlstone Manor House	Professor Coram
4.	Briarbrae	Hilton Cubitt
5.	Charlington Hall	John Douglas
6.	Cheeseman’s	Colonel Emsworth
7.	Copper Beeches	Robert Ferguson
8.	Deep Dene House	Mr. Frankland
9.	Hatherley Farmhouse	Aloysius Garcia
10.	Lafter Hall	J. Neil Gibson
11.	Manor House of Hurlstone	Baron Adelbert Gruner
12.	Pondicherry Lodge	Charles Augustus Milverton
13.	Ridling Thorpe Manor	Reginald Musgrave
14.	Stoke Moran Manor House	Jonas Oldacre
15.	Thor Place	Mr. Phelps
16.	Tuxbury Old Hall	Dr. Grimesby Roylott
17.	Vernon Lodge	Captain Peter Carey
18.	Wisteria Lodge	Jephro Rucastle
19.	Woodman’s Lee	Bartholomew Sholto
20.	Yoxley Old Place	Mr. Williamson

**From the Baker Street Journal, October, 1951**

Answers will be in next month’s Newsletter...

## July Quiz -- How Good an Actor was He ?? Answers

1. To get information from a housemaid, he posed as a plumber with higher employment aspirations dancing in his head.	Charles Augustus Milverton
2. In the same story he dressed as a common laborer, looking for work; the next day he was in drag, dressed as an old woman carrying a parasol.	The Mazarin Stone
3. In this story, he impersonated an Irish-American, looking very much like a caricature of Uncle Sam.	His Last Bow
4. Using the cloth, he changed his appearance and personality to that of a benevolent clergyman.	A Scandal in Bohemia
5. With a very edgy temper, he disguised himself as an elderly book collector with many body deformities.	The Empty House
6. Posing as an elderly gentleman, hooked on opium, he finished the look with an opium pipe between his knees, while looking very frail and wrinkled.	The Man with the Twisted Lip
7. As a badly-dressed homeless vagrant, he called at the suspect's residence, carried on a conversation with the valet, and bought a pair of cast-off shoes.	The Beryl Coronet
8. Dressed in seafaring attire, including a pea-jacket and a coarse red scarf, his breathing labored such as an elderly asthmatic.	The Sign of Four
9. Using the nom de plume Basil, he disguised himself as a sea captain, pretending to organize an Arctic expedition.	Black Peter
10. Once again, he took on the cloth, disguised as an Italian priest to travel to the continent.	The Final Problem

### Who dunnit:



Third Mate

Steve Mason  
[mason.steve@epa.gov](mailto:mason.steve@epa.gov)

Helmsman

Joe Fay  
[joef@HA.com](mailto:joef@HA.com)

Spiritual Advisors

Don Hobbs, BSI  
[221b@verizon.net](mailto:221b@verizon.net)

Secretaries

Jim Webb  
[jimwebb@ix.netcom.com](mailto:jimwebb@ix.netcom.com)

Cindy Brown  
 Pam Mason

WebDonuts.com



The pets of Sherlock Holmes