

# Sherlockian Theatrical Society



*A non-Judgmental Play Appreciation Society*

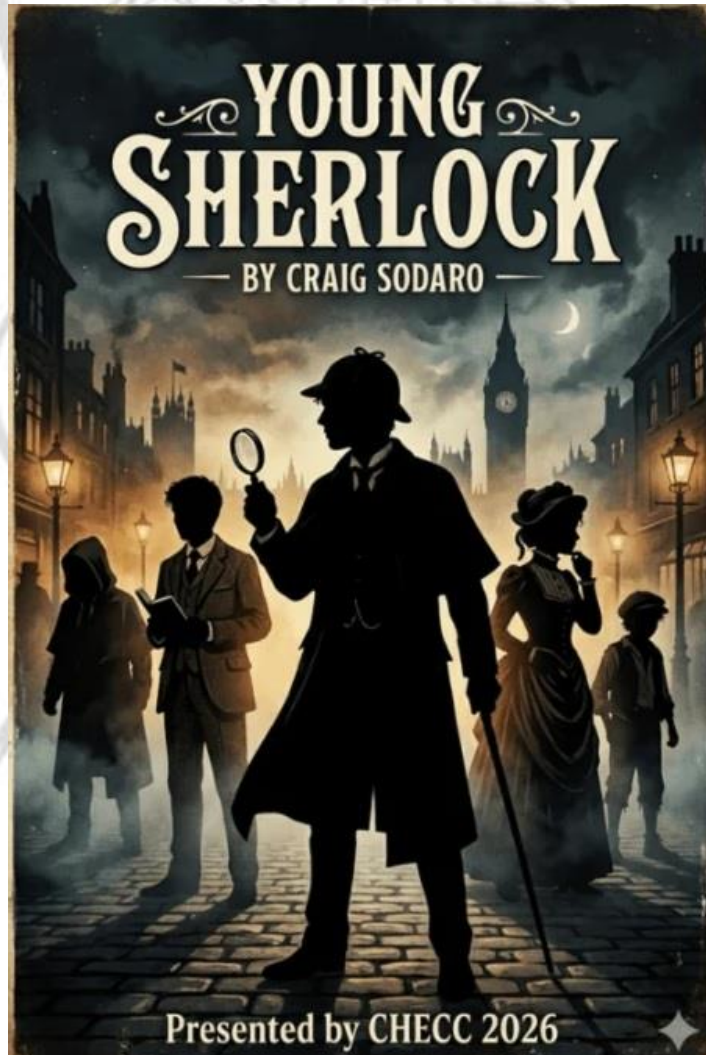
Number 68

May 09, 2026

**"Young Sherlock"**  
**By Craig Sodaro**  
**Lockhart, TX**

**O**n a warm Saturday afternoon, Uncritic #001 took a 3 ½ hour journey to Lockhart, Texas to the Gaslight-Baker Theatre to attend a one-night only presentation of a new play - Young Sherlock. This isn't the Nicholas Rowe film of the same name. This is a complete reimagination of our hero. The venue seats roughly 100 patrons and tonight's performance was completely sold-out. The crowd, mainly parents, grandparents, and siblings of those on stage was really into what the actors doing on stage and were thoroughly entertained.

**T**he two-act play opens at Butterworth Academy (no pancakes or syrup in sight), where two girls have been kidnapped from the school, and John Watson (Luke La Cook) hopes his friend and classmate will be able to solve his first crime. Despite a psychic, Madame Lulu (Ivy Bantham), appearing on the scene and guaranteeing to



find the students, the bumbling, inept Constable Bing (Harrison G. Moore) begins his own investigation. The entire cast ranged in ages from 9 to 18. Sherlock Holmes (Cole Phillips) does a wonderful job as our hero, but Lulu steals the show with her wild rantings and gesticulations, while constantly reminding everyone else on stage that she is a PSYCHIC! The cast on stage numbers 22 actors and many familiar characters.

**W**e get to meet Larry Lestrade (Beriah Gonzales), Miss Butterworth (Peyton Phillips), James Moriarty (John Lanquist), Henry Baskerville (Judah White), Helen Stoner (Talia Peterson), and Irene Adler (Journey de La Torrey) to name just a few. Many of the actors are students at Butterworth Academy and had very few lines to recite. This is a fast moving play with actors flying in every direction searching for the missing students. When the bumbling Constable Bing gets everything wrong, Sherlock Holmes comes through at the end to solve the case, return the missing girls and thus launching his career as a great consulting detective who can solve crimes even before the police can. He proves once again that Sherlock knows best.

**D**irectors Ron Wilson, Katherine Moore, and Stephanie Mariar are to be congratulated for the wonderful production. Given the age range of the cast, there were inherent issues but their production was flawless. Not one actor messed up a single line. Because all of the action takes place in the Great Hall of Butterworth Academy, scene changes were not a problem. A large screen above the stage was used to show ransom notes being read on stage or the view of an upstairs balcony most of the time. It must be rewarding seeing the play go so perfectly and seeing these young actors deliver performances of seasoned pros.

**T**he rest of the cast featured Monique/ Leticia (Juniper Kimball), Carlotta/ Rosa (Rebekah Runyon), Ruda (Aubrey White), Miss Klegg (Kaitlyn Orr), Hetty Hudson (Leah Meier), who was Martha Hudson's daughter, Lady Windsor (Kaylee Moulton), Signora Medici (Austynne De La Torre), Madame Bonaparte (Clara Peterson, Señor Goya (Theodore Peterson, Cyril (Grady White), Duke Simpson (Jonah Hickman, and Hortense (Abbigail Runyon). By the names of the cast, one does not need to be Sherlock Holmes to deduce many pairs of brother and sister took part in this play.

**A**s a reminder, The Sherlockian Theatrical Society is a nonjudgmental society. It is our belief that any play about Sherlock Holmes is worth attending. We love Sherlock Holmes and we love live theater, so nothing will deter us off of our chosen path.

**B**reak a leg!!!

Flower Mound, TX  
Mar. 10, 2026